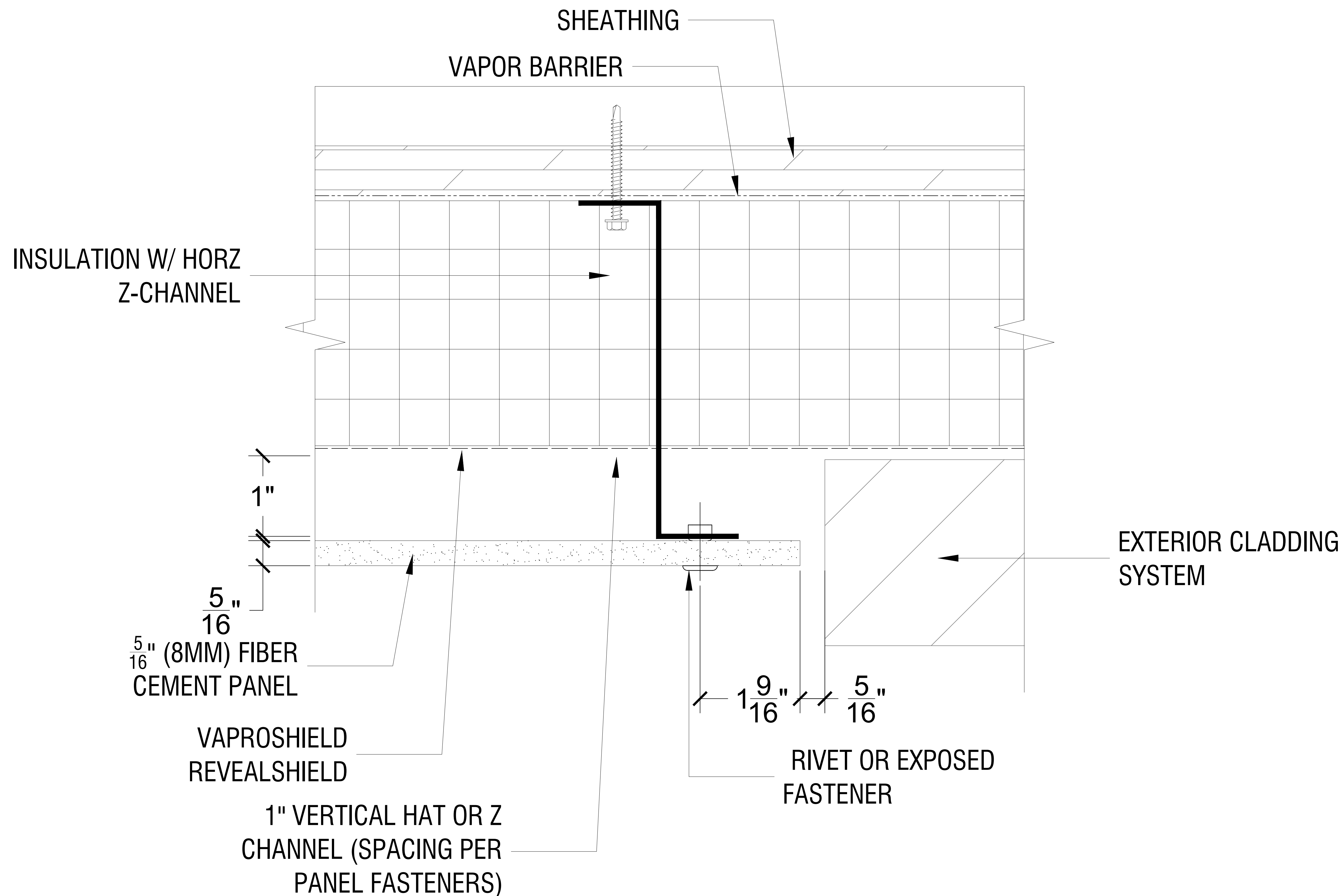


NOTES:-

1. PANEL VERTICAL AND HORIZONTAL JOINT SPACING SHOULD BE $\frac{5}{16}$ " TYPICAL.
2. EPDM GASKET MUST BE INSTALLED CONTINUOUSLY ON ALL SUBFRAMING.



BOLTON
CLADDING

LEGEND:

PROJECT:
EXPOSED FASTENER SYSTEM

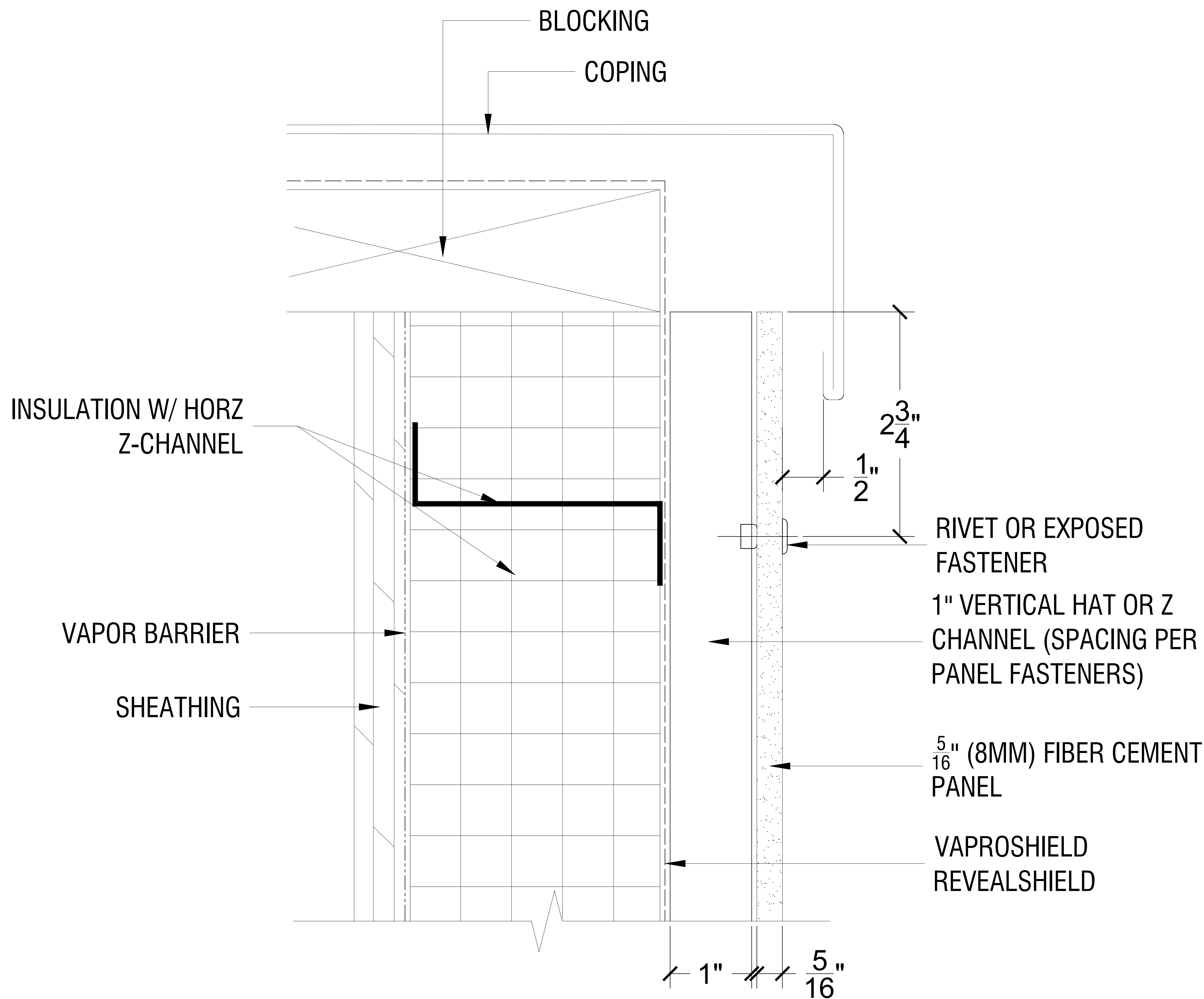
SHEET TITLE:
TYPICAL BUTT JOINT DETAIL

DATE:
DRAWING BY:
CHECKED BY:
SHEET SIZE:
REVISION NUMBER:

PD-01

NOTES:-

1. PANEL VERTICAL AND HORIZONTAL JOINT SPACING SHOULD BE $\frac{5}{16}$ " TYPICAL.
2. EPDM GASKET MUST BE INSTALLED CONTINUOUSLY ON ALL SUBFRAMING.



BOLTON
CLADDING

LEGEND:

PROJECT:
EXPOSED FASTENER SYSTEM

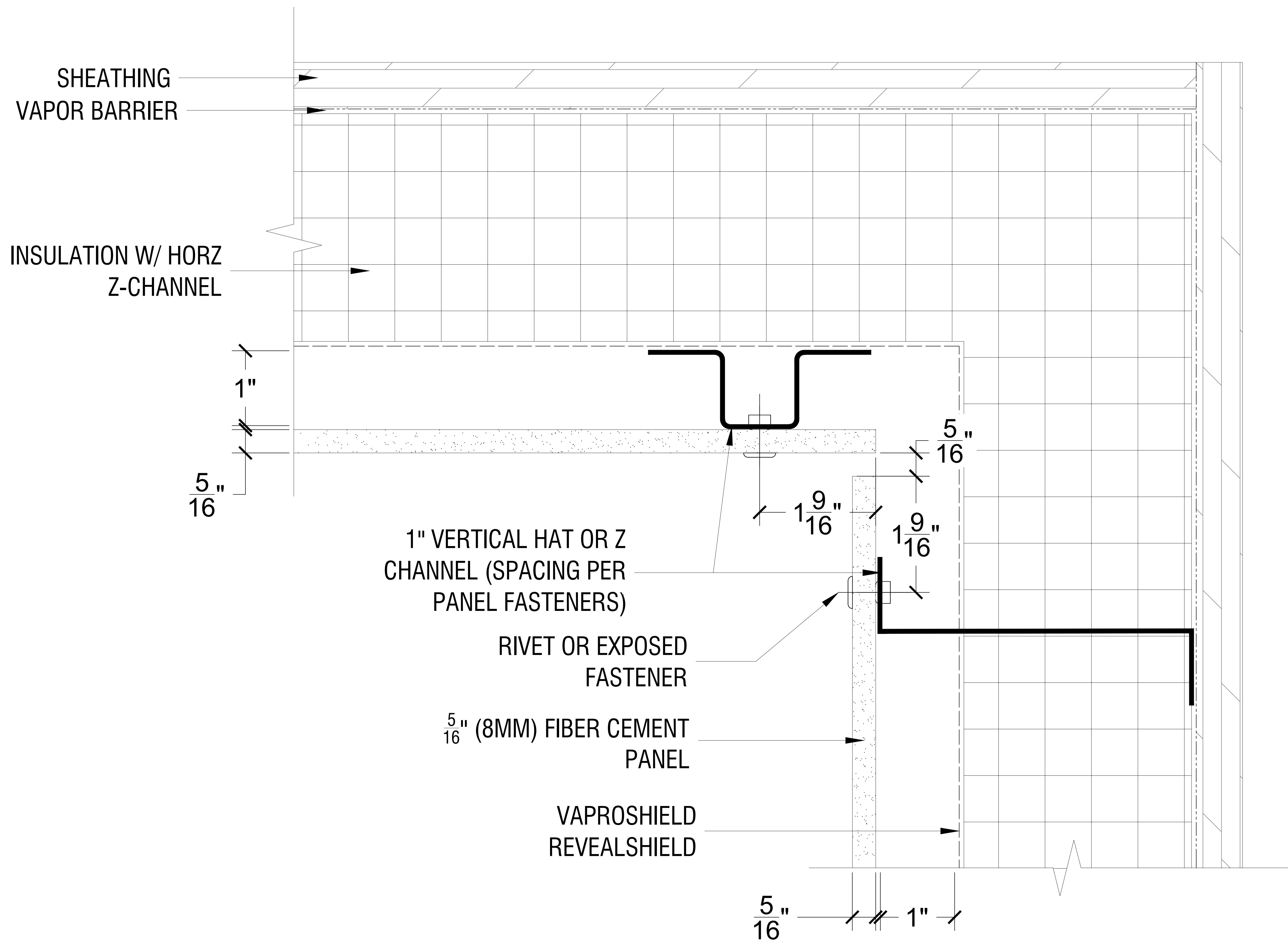
SHEET TITLE:
TYPICAL COPING PANEL DETAIL

DATE:
DRAWING BY:
CHECKED BY:
SHEET SIZE:
REVISION NUMBER:

PD-02

NOTES:-

1. PANEL VERTICAL AND HORIZONTAL JOINT SPACING SHOULD BE $\frac{5}{16}$ " TYPICAL.
2. EPDM GASKET MUST BE INSTALLED CONTINUOUSLY ON ALL SUBFRAMING.



BOLTON
CLADDING

LEGEND:

PROJECT:
EXPOSED FASTENER SYSTEM

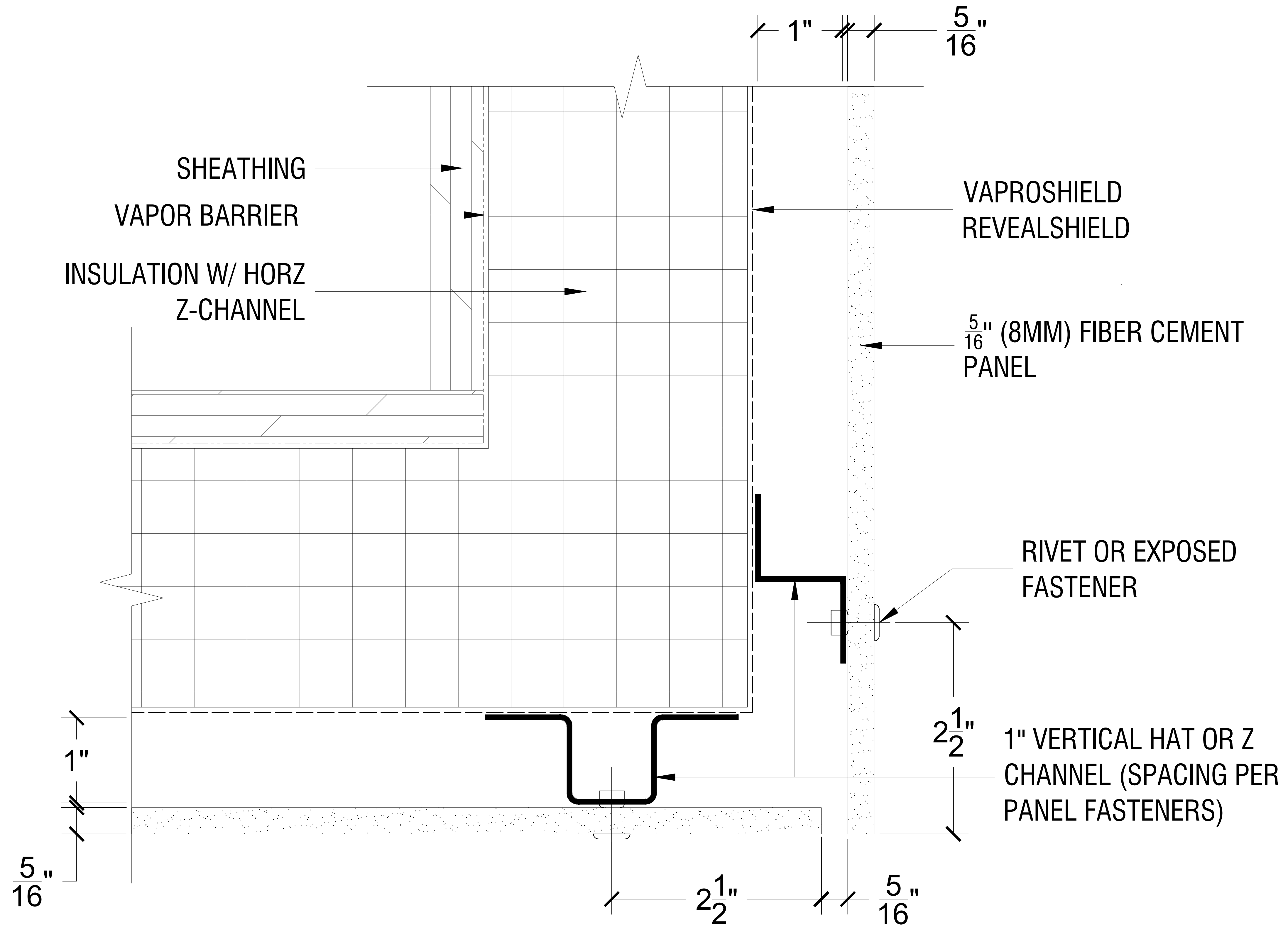
SHEET TITLE:
TYPICAL INSIDE CORNER DETAIL

DATE:
DRAWING BY:
CHECKED BY:
SHEET SIZE:
REVISION NUMBER:

PD-03

NOTES:-

1. PANEL VERTICAL AND HORIZONTAL JOINT SPACING SHOULD BE $\frac{5}{16}$ " TYPICAL.
2. EPDM GASKET MUST BE INSTALLED CONTINUOUSLY ON ALL SUBFRAMING.



LEGEND:

PROJECT:
EXPOSED FASTENER SYSTEM

SHEET TITLE:
TYPICAL OUTSIDE CORNER DETAIL

DATE:

DRAWING BY:

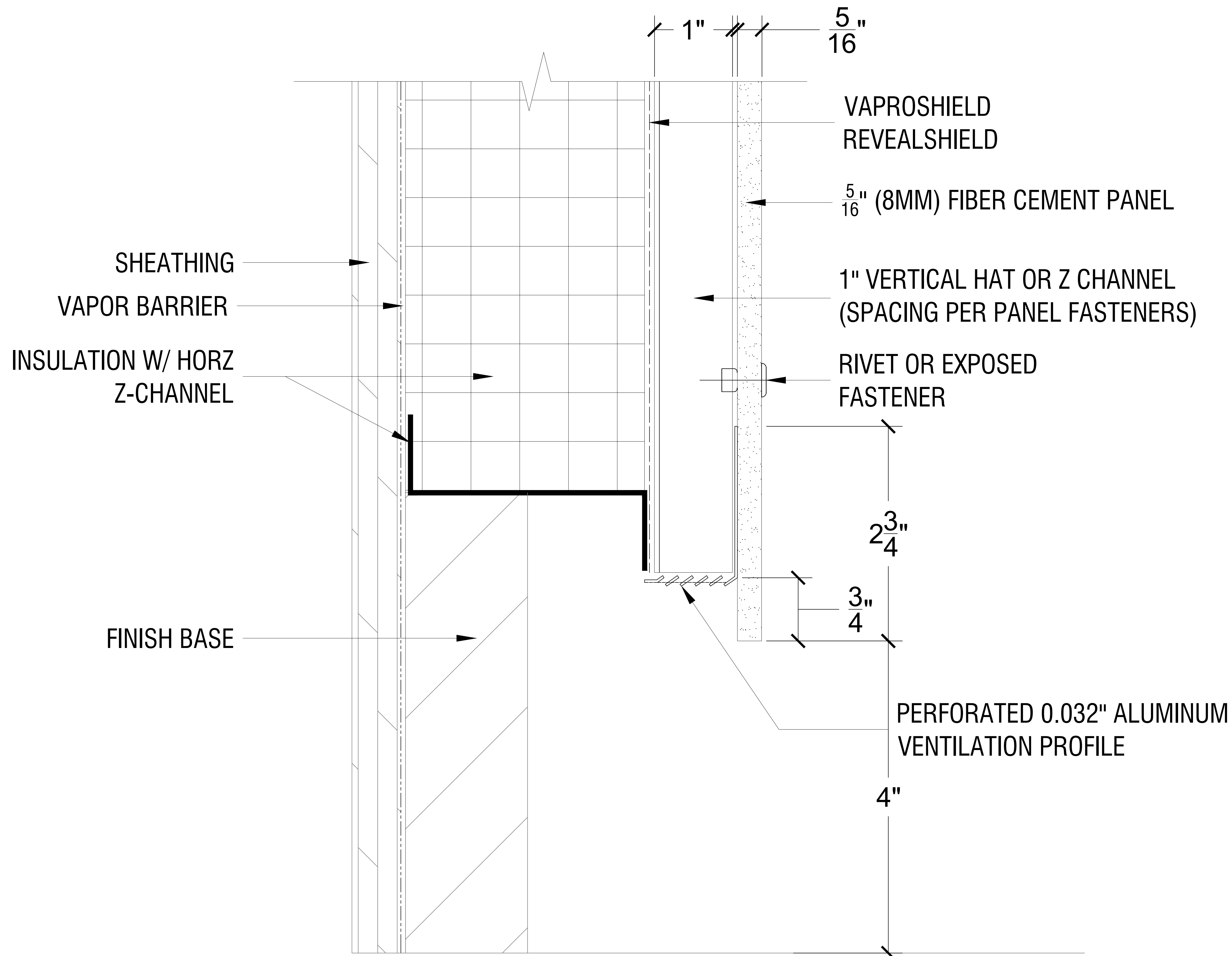
CHECKED BY:

SHEET SIZE:

REVISION NUMBER:

NOTES:-

1. PANEL VERTICAL AND HORIZONTAL JOINT SPACING SHOULD BE $\frac{5}{16}$ " TYPICAL.
2. EPDM GASKET MUST BE INSTALLED CONTINUOUSLY ON ALL SUBFRAMING.



BOLTON
CLADDING

LEGEND:

PROJECT:
EXPOSED FASTENER SYSTEM

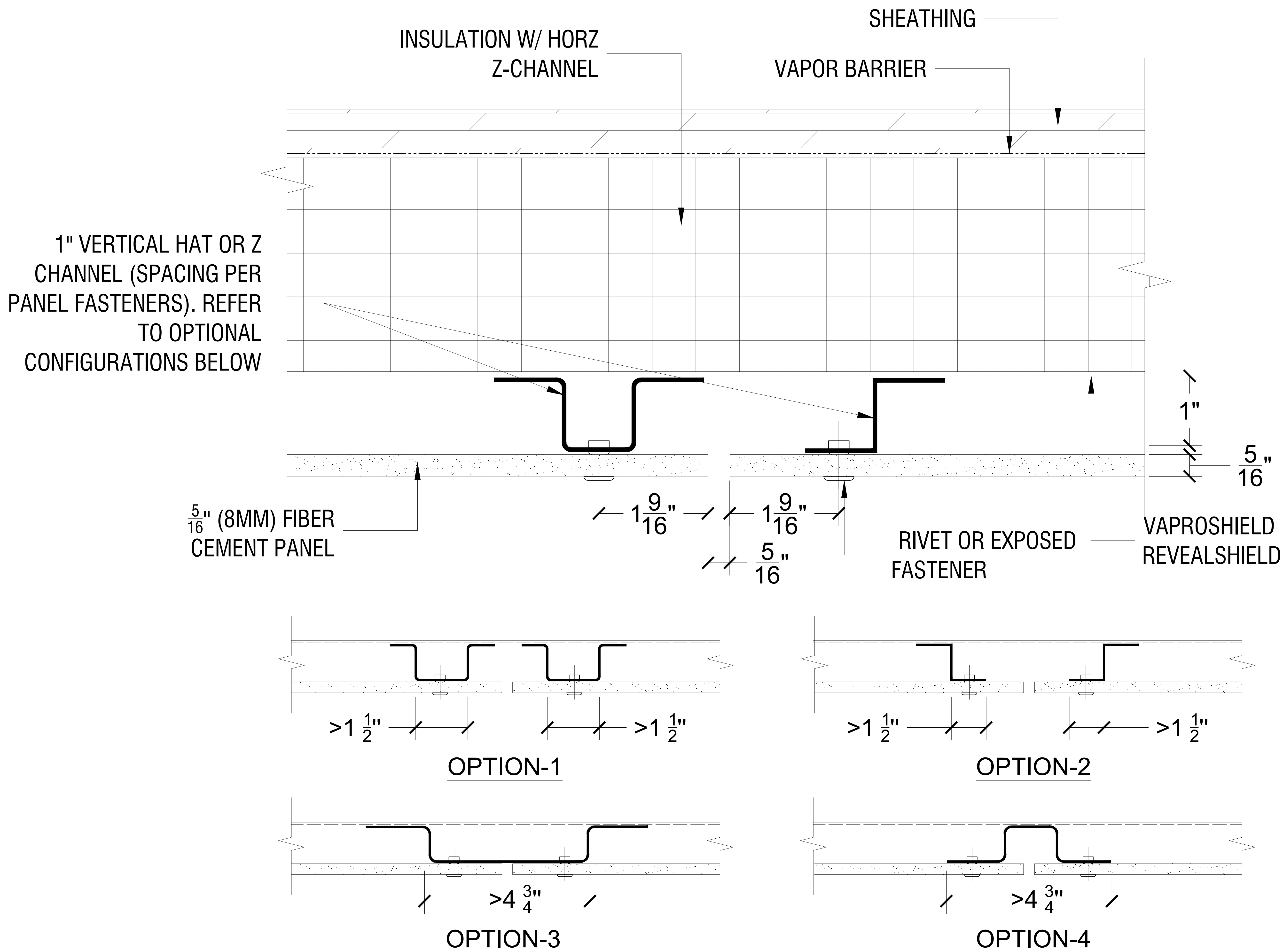
SHEET TITLE:
TYPICAL PANEL BASE DETAIL

DATE:
DRAWING BY:
CHECKED BY:
SHEET SIZE:
REVISION NUMBER:

PD-05

NOTES:-

1. PANEL VERTICAL AND HORIZONTAL JOINT SPACING SHOULD BE $\frac{5}{16}$ " TYPICAL.
2. EPDM GASKET MUST BE INSTALLED CONTINUOUSLY ON ALL SUBFRAMING.



BOLTON
CLADDING

LEGEND:

PROJECT:
EXPOSED FASTENER SYSTEM

SHEET TITLE:
TYPICAL VERTICAL PANEL JOINT DETAIL

DATE:

DRAWING BY:

CHECKED BY:

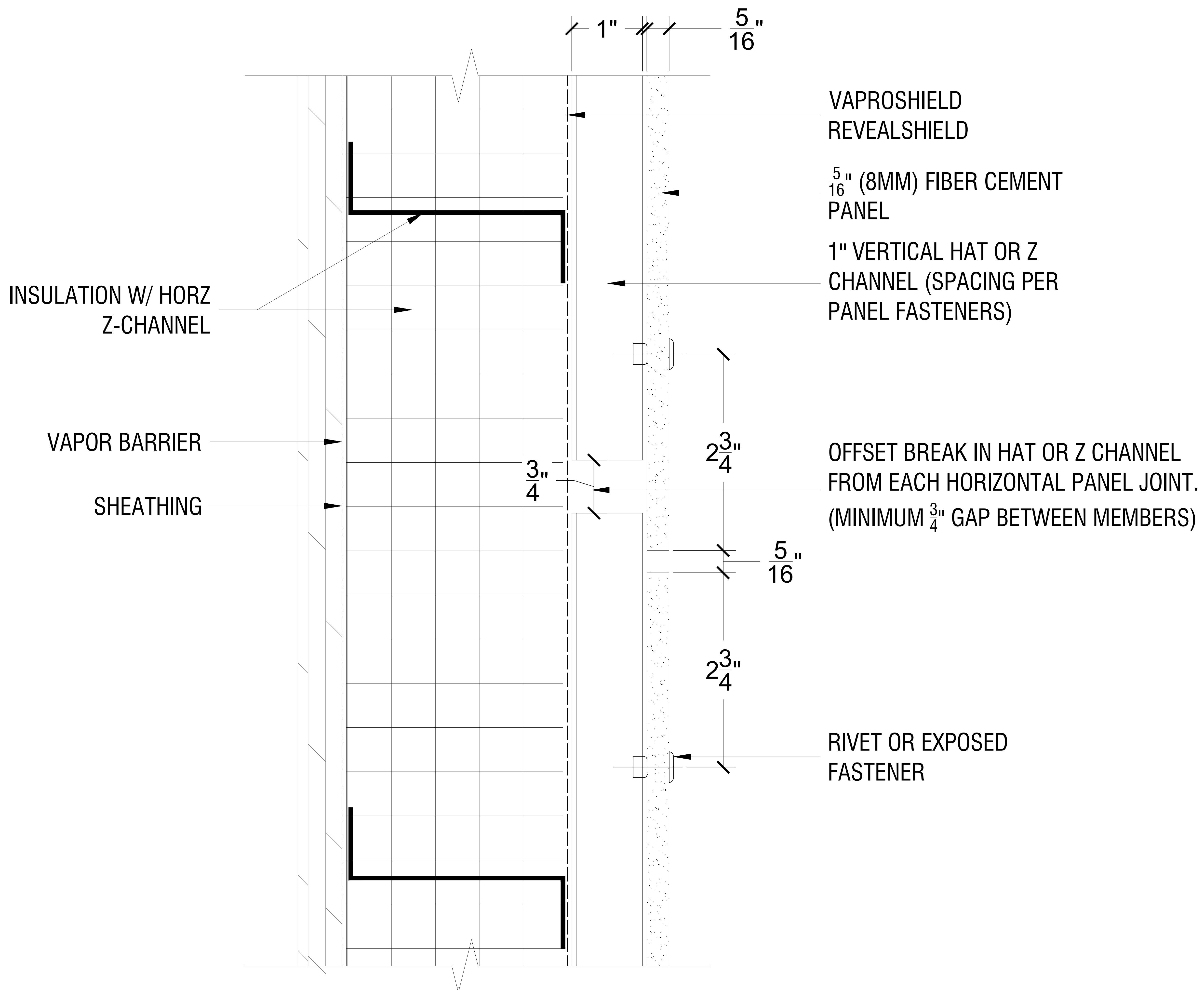
SHEET SIZE:

REVISION NUMBER:

PD-06

NOTES:-

1. PANEL VERTICAL AND HORIZONTAL JOINT SPACING SHOULD BE $\frac{5}{16}$ " TYPICAL.
2. EPDM GASKET MUST BE INSTALLED CONTINUOUSLY ON ALL SUBFRAMING.



LEGEND:

PROJECT:
EXPOSED FASTENER SYSTEM

SHEET TITLE:
 TYPICAL HORIZONTAL PANEL JOINT DETAIL

DATE:

DRAWING BY:

CHECKED BY:

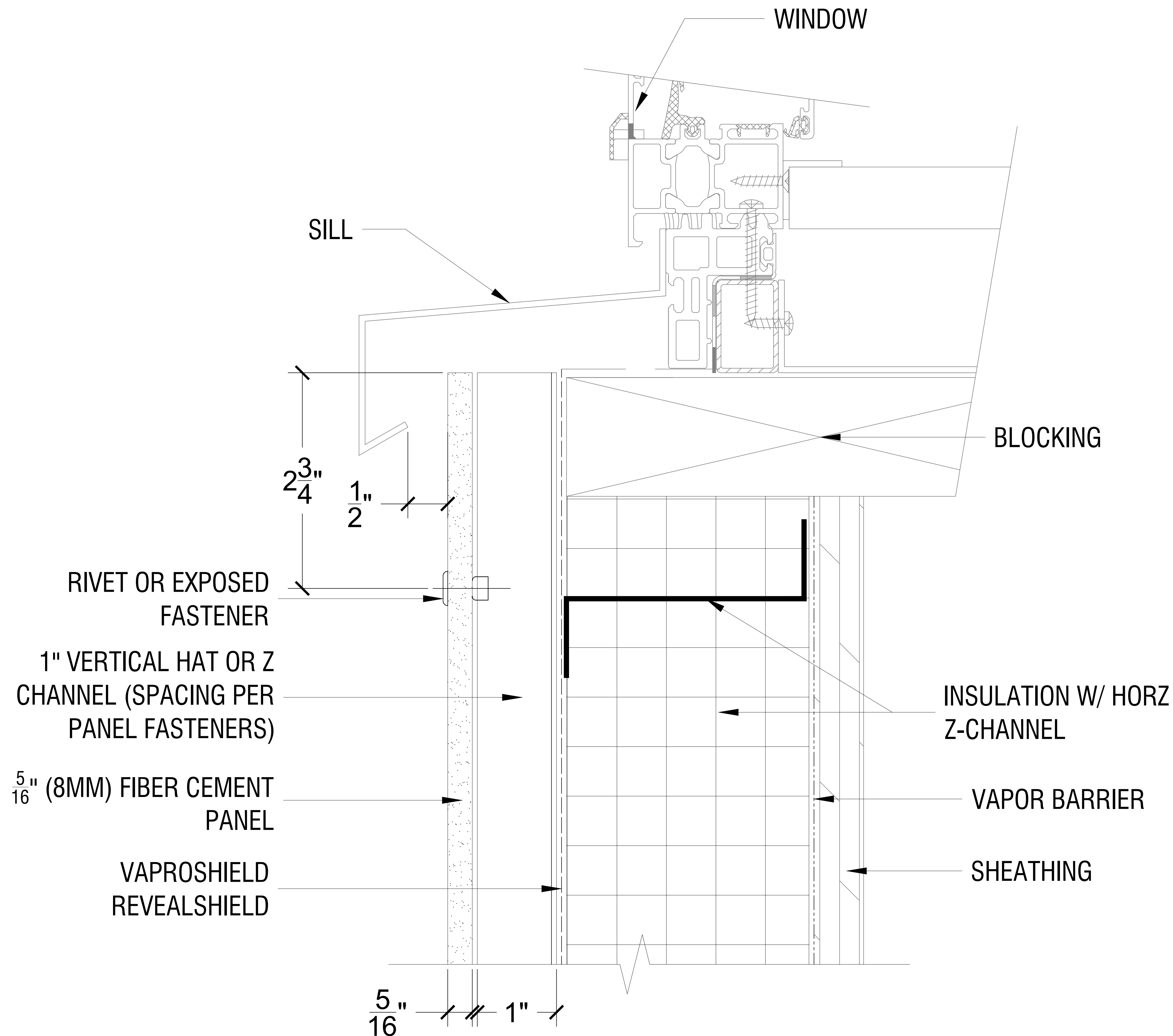
SHEET SIZE:

REVISION NUMBER:

PD-07

NOTES:-

1. PANEL VERTICAL AND HORIZONTAL JOINT SPACING SHOULD BE $\frac{5}{16}$ " TYPICAL.
2. EPDM GASKET MUST BE INSTALLED CONTINUOUSLY ON ALL SUBFRAMING.



BOLTON
CLADDING

LEGEND:

PROJECT:
EXPOSED FASTENER SYSTEM

SHEET TITLE:
TYPICAL WINDOW SILL DETAIL

DATE:

DRAWING BY:

CHECKED BY:

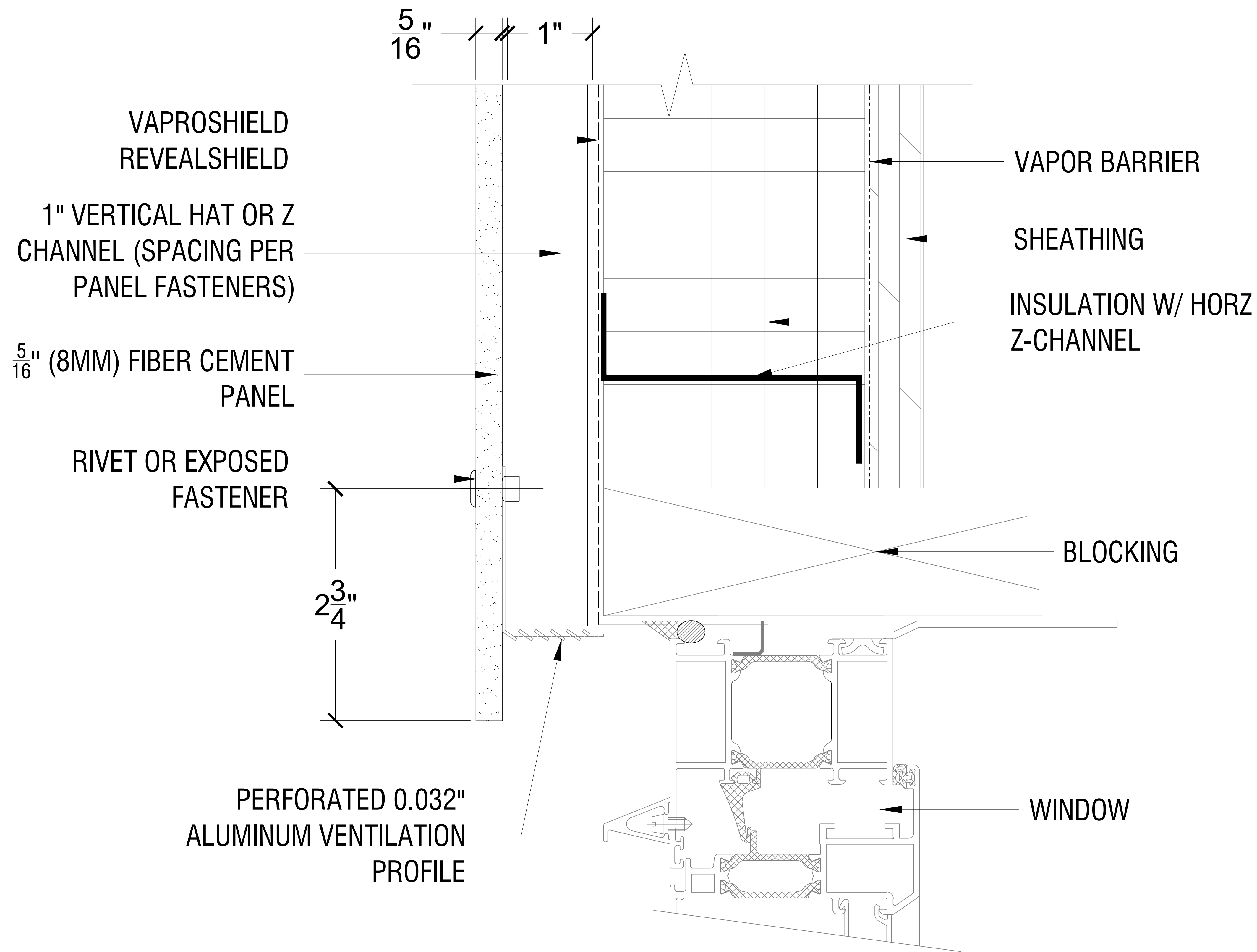
SHEET SIZE:

REVISION NUMBER:

PD-08

NOTES:-

1. PANEL VERTICAL AND HORIZONTAL JOINT SPACING SHOULD BE $\frac{5}{16}$ " TYPICAL.
2. EPDM GASKET MUST BE INSTALLED CONTINUOUSLY ON ALL SUBFRAMING.



LEGEND:

PROJECT:
EXPOSED FASTENER SYSTEM

SHEET TITLE:
TYPICAL WINDOW HEAD DETAIL

DATE:

DRAWING BY:

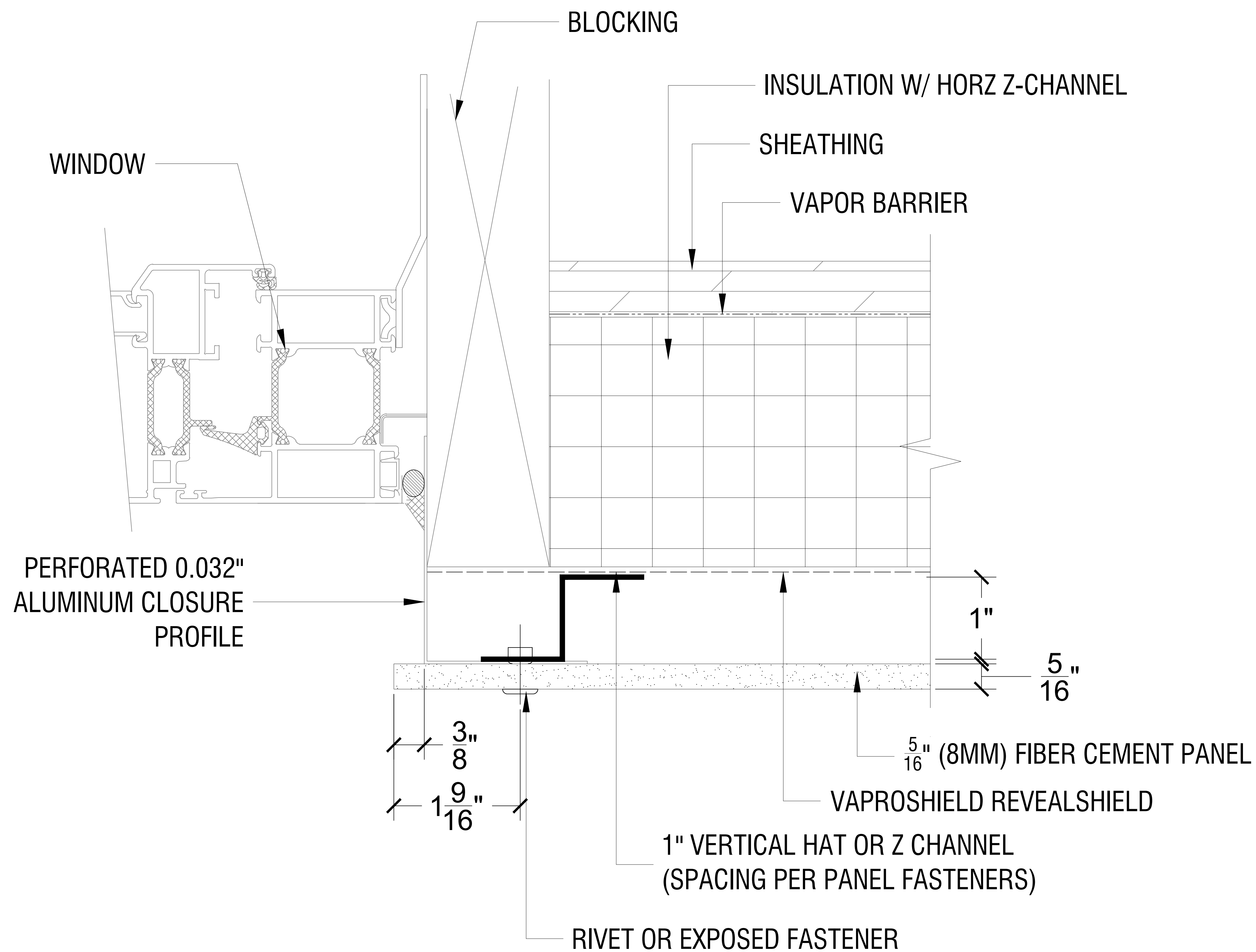
CHECKED BY:

SHEET SIZE:

REVISION NUMBER:

NOTES:-

1. PANEL VERTICAL AND HORIZONTAL JOINT SPACING SHOULD BE $\frac{5}{16}$ " TYPICAL.
2. EPDM GASKET MUST BE INSTALLED CONTINUOUSLY ON ALL SUBFRAMING.



BOLTON
CLADDING

LEGEND:

PROJECT:
EXPOSED FASTENER SYSTEM

SHEET TITLE:
TYPICAL WINDOW JAMB DETAIL

DATE:

DRAWING BY:

CHECKED BY:

SHEET SIZE:

REVISION NUMBER:

PD-10