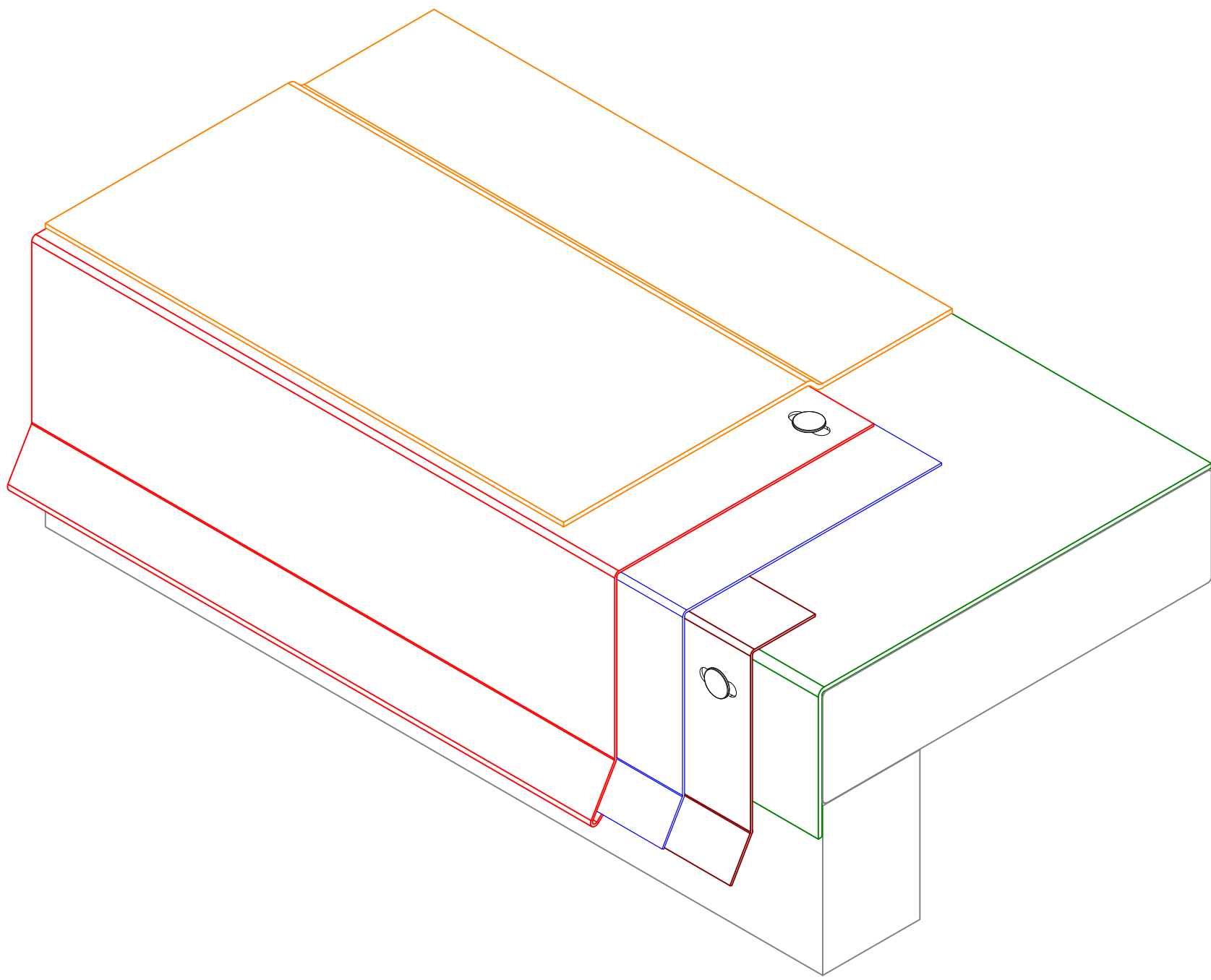


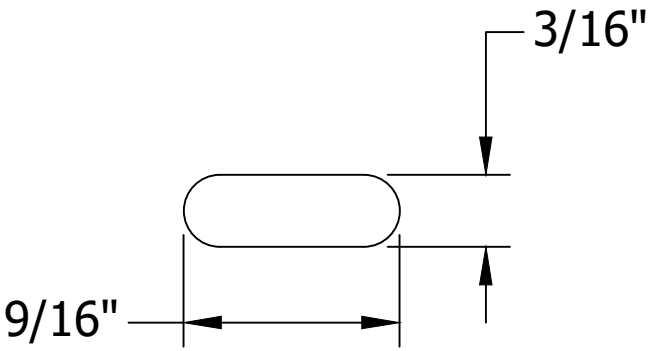
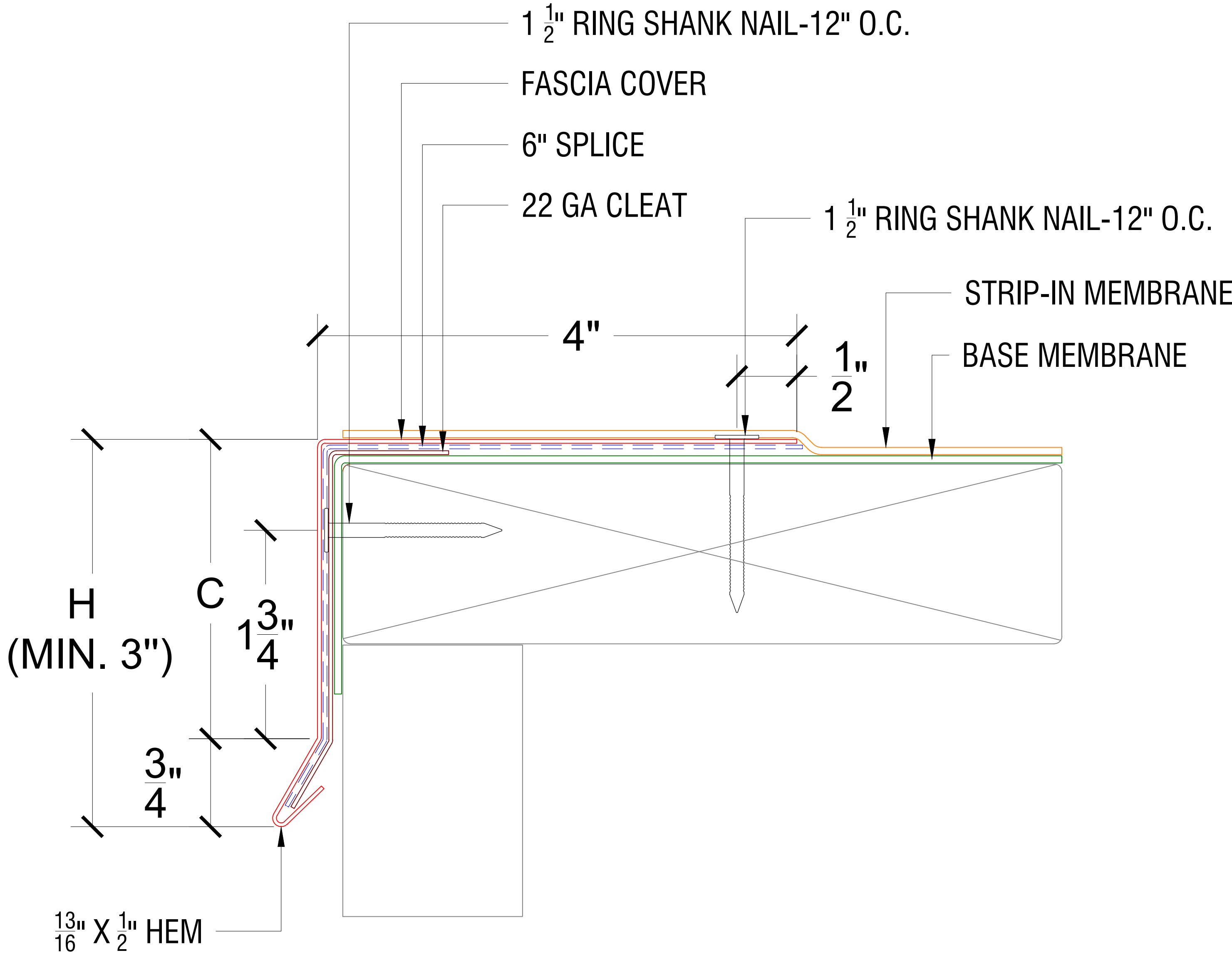
BOM per 12'	
Component	Quantity
Fascia Cover	1
6" Splice	1
Continuous 22 GA Cleat	1
1 1/2" Ring Shank nail	24

Standard Materials	
Material	Available Gauges
Pre-Finished Steel	24 GA, 22 GA
Stainless Steel	24 GA, 22 GA
Pre-Finished Alum.	.040, .050, .063
Mill Alum.	.040, .050, .063

Dimensions	
Coverage (C)	Height (H)
2-1/2"	3-1/4"
4"	4-3/4"
5-1/2"	6-1/4"
7"	7-3/4"



2 ISOMETRIC VIEW
SCALE: NTS.



TOP AND SIDE
FACE SLOTTING

1 DRIP EDGE FASCIA DETAIL
SCALE: NTS.

BOLTON
CLADDING

NOTES/MATERIAL:

PROJECT:
METAL ROOFING MATERIALS

SHEET TITLE:
DRIP EDGE FASCIA DETAIL

DATE:

DRAWING BY:

CHECKED BY:

SHEET SIZE:

REVISION NUMBER:

PD-01